

Menutree Website:

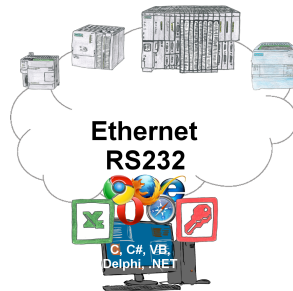
- + Products / docu / downloads
- + Accessories
 - + Connection cable / adapter
 - + Ethernet
 - + Cross-cable

QR-Code Website:



Please make sure to update your drivers before using our products.

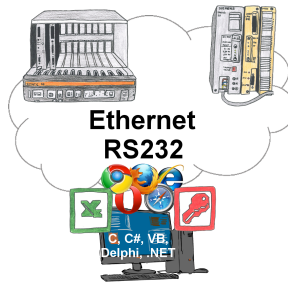
Communication-driver for S7-PLC



S7-PLCs and you need data in your PC or production planning system?

The S7-communication-drivers connect the office-world with the control-world. Be it classic with a serial-port of the PC up to communication over the network. Thanks to additional adapters (such as S7-LAN), controllers without a LAN connection can be connected to the network. Nothing stands in the way of communication with an IP-address. On your PC for Windows as a DLL-file, for Linux as an object, you have tools where you can access the data of the controls by calling up functions such as "ReadBlock" or "WriteFlag". Tie for e.g. the DLL into your project and your application already has PLC-access or simply access the data with Excel and process it in Excel.

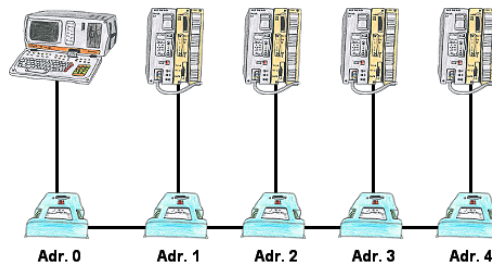
Communication-driver for S5-PLC



S5-PLCs and you need data in your PC or production planning system?

The S5-communication-drivers connect the office-world with the control-world. Be it classic with a serial-port of the PC up to communication over the network. Thanks to additional adapters (such as S5-LAN++), controllers without a LAN connection can be connected to the network. Nothing stands in the way of communication with an IP-address. On your PC for Windows as a DLL-file, for Linux as an object, you have tools where you can access the data of the controls by calling up functions such as "ReadBlock" or "WriteFlag". Tie for e.g. the DLL into your project and your application already has PLC-access or simply access the data with Excel and process it in Excel.

Linking of S5-PLC's without modifying the PLC-program



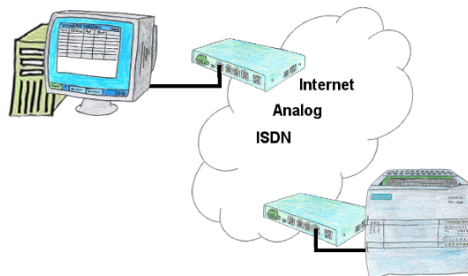
You have to link several S5-PLC's so that in case of need you can respond to all of them without modifying the PLC-program? No problem, connect all PLC's that are in the run with the IBX-Klemme, set up the respective address (1 to 30) at the IBX-Klemme and with the address 0 you will be able to respond to all PLC's via PD-bus-path selection.

Easiest configuration by included webservice



To configure ALF you don't need additional driver or special cables, you connect your PC via LAN or WLAN with ALF and over the integrated webservice you can configure the needed function.

Integrated phone-book



You have to consider several facilities and do not want to keep a watch list with phone numbers? No problem, the TELE-router contains a phone book, so you any time maintain the entire data connection in the router and build to the opposite side by clicking the link in the web browser.