

**Menutree Website:**

- + Products / docu / downloads
- + Accessories
  - + Connection cable / adapter
  - + RS232
  - + Serial cable 9-pin

**QR-Code Website:**



Please make sure to update your drivers before using our products.

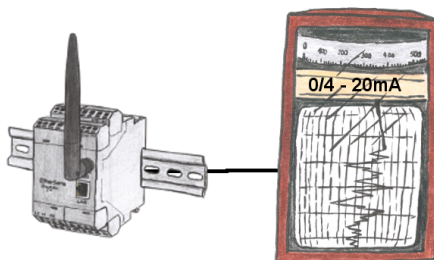
Operation/control via integrated web-server



Observe the collected energy-information (voltages, power, currents, phase-angles, ...) on the integrated web-server of `_MONI_` "cable-less" with your mobile-phone or tablet. Change the parameterization of `_MONI_`, operate and control `_MONI_` easily via the web interface.

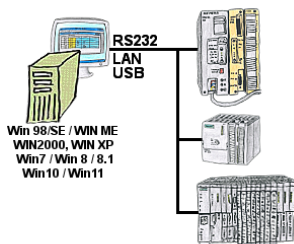
Of course you can also operate wired, where you put `_MONI_` in your network. Parallel operation of LAN and Wifi is also possible.

## Data acquisition/logging



By connecting a line-recorder to the EtherSens-device anyone without network-knowledge can visually capture and further process the log.

## Programming/controlling of S5/S7[FREEWARE without support]-PLC's



Program change on your systems and no original programming-package?

With PG-2000, a universal programming system for S5 and S7 controllers [S7 FREEWARE without support], you can make changes to the controllers yourself. Connect the PC with the appropriate interface-product via the COM-, USB- or LAN-port.

One surface for S5- and S7-programming [S7 FREEWARE without support] so you don't have to get used to it. Windows as the operating-system, work with every current version of Windows. Where the original programming packages no longer works, work with PG-2000 ONLINE.

## Detect Profinet burglary



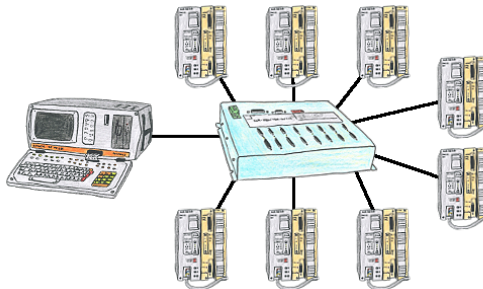
Detection and logging of unauthorized access in the defined Profinet

Attempted break-ins and access to the network are recognized immediately and e.g. reported by email

Logging of all accesses in the network for historical processing

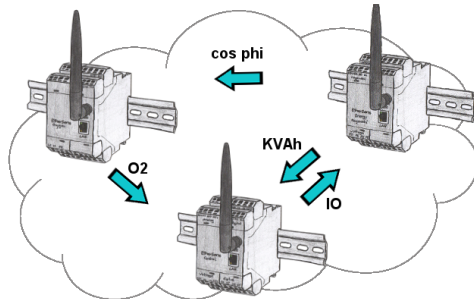
Possible data-storage USB-stick or FTP-server via USB-network-stick.

## Many PLC-devices conflated



You have many PLC and you want to programm them central on one place? No problem, you have to connect them all to the KOR/MUX-Tele-Switch an with the PD-bus-selection of your Step5-software you go ONLINE. Of course the KOR/MUX-Tele-Switch is cascadable, so you can connect up to 30 PLCs to the devices.

## EtherSens-cloud



By the EtherSens-cloud each EtherSens-device can exchange data, transfer data and forward to other devices. As if you use one device that records all necessary parameters centrally.

## Detect and alarm Profinet burglary



Detection and logging of unauthorized access in the defined Profinet

Attempted break-ins and access to the network are recognized immediately and e.g. reported by email

Logging of all accesses in the network for historical processing

Possible data-storage USB-stick or FTP-server via USB-network-stick.