

Handling-Shortinstruction for Interface-Cable for S5 V1.3

PG-UNI-Kabel

- Couples the PC (9pol. COM-interface) with the 15 pole X4/X5 interface port of the plc
- Galvanically separably to 1kV with PG ISO adapter
- Prolongable up to 300 meters
- Complete electronics in the plug housing
- Supply from the PLC over the current sources of the PG-port
- Functioned also at some CP's, IP's and Sinumerik controls



PG-UNI-II Kabel

- ESD firm transducer component up to 15kV
- 9pin and 15pin plug housings are made of solid metal
- For controll of data transmission, there are two LED's integrated (RxD and TxD).
- Couples the PC (9pol. COM-interface) with the 15 pole X4/X5 interface port of the plc
- Galvanically separably to 1kV with PG ISO adapter
- Prolongable up to 300 meters
- Complete electronics in the plug housing
- Supply from the PLC over the current sources
- Functioned also at some CP's, IP's and Sinumerik controls



PG-USB-Kabel

- Couples the PC (9pol. COM-interface) with the 15 pole X4/X5 interface port of the plc
- 15pin plug housings are made of solid metal
- Complete electronics in the plug housing
- Supply of the cable complete from the PC
- Prolongable up to 100 meters
- Is „active“ in relation of the plc
- Is working with standard S5-Software (Drivers for Win2000 and XP will be delivered with this cable)



Attention: The delivered driver for Windows 2000 and XP installs the PG-USB-Kabel as a virtual COM-Port. For use with the original Siemens Step5 software you have to install the also delivered driver "PG-USB-Kabel an S5" and then you can use it.

PG-COM-Kabel

- Couples the PC (9pol. COM-interface) with the 15 pole X4/X5 interface port of the plc
- Complete electronics in the plug housing
- Supply from the PLC over the 5V of the PG-port

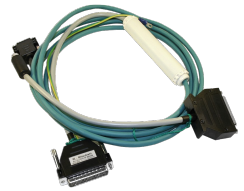


PG-ISO-SET

- Galvanically separable from pc to the plc up to 1kV
- contact-protected housing, it is plastic housing
- The set contains PG-UNI-Kabel (3m) Art.Nr.9359-3 and the PG-ISO-Adapter Art.Nr.9359-8
- Supply of the module from the plc Voltage 5V and/or 24V

SC-09-Kabel

- Couples the PC (9pol. COM-interface) with the RS485 interface port of the plc
- PLC coupling with 25pin D-Sub or with Mini-Din-plug (special adapter)
- Supply from the PLC over the 5V of the PG-port
- Complete electronics in the plug housing



PG-ISO-Adapter for PG-UNI/PG-UNI-II

- Galvanically separable from pc above the PG-UNI-Kabel to the plc up to 1kV
- contact-protected housing, it is plastic housing
- Generates a new Ground and new Current Sources for the communication
- Supply of the module from the plc Voltage 5V and/or 24V



S5-LAN+-Modul

- 3 minutes and PG interface of the S5-PLC-control is network-compatible
- AS511 via virtual COM port
- S7-TCPIP RFC1006 compatible (S7 panel to S5 PLC)
- Supply of the module from the PLC voltage 24V
- Active module, integrated power sources for TTY communication



S5-BRIDGE (LAN and WIFI communication parallel)

- 10 minutes and PG interface of the S5 PLC control is network-compatible (cable and/or WIFI)
- AS511 via virtual COM port (cable and/or WIFI)
- S7-TCPIP RFC1006 compatible (S7 panel on S5 PLC, cable and/or WIFI)
- Supply of the module from the PLC voltage 24V
- Active module, integrated power sources for TTY communication



Netz-Adapter for PG-UNI/PG-UNI-II

- Generates new Current Sources for the communication
- Operation area: damaged Current Sources, not existing Current Sources, sanded Current Sources, passive Current Sources
- Supply of the module with 24V external



Additional adapters for PG-UNI/PG-UNI-II

general : Small Adapter, only 10cm long
Plug mechanics fitting to the plc



CP525-Adapter

- Connection to the **programming port** of the CP525

CP525-K-Adapter

- Connection to the **communication port** of the CP525
- This adapter can be used for following devices, too: CP524 and SAS523/525

AG150-Adapter

- **Only** use with the Netzadapter, because plc AG150 has an passive interface port!

WF470-Adapter

- **Only** used with the Netzadapter, because WF470 has an passive interface port!

SINUM-Adapter

- This adapter can be used for following plc-type: 805, 810, 820, 840, 850, 880

Additional adapters for PG-USB

general : Small Adapter, only 10cm long
 Plug mechanics fitting to the plc



CP525-Adapter

- Connection to the **programming port** of the CP525

CP525-K-Adapter

- Connection to the **communication port** of the CP525
- This adapter can be used for following devices, too: CP524 and SAS523/525

AG150-Adapter

WF470-Adapter

SINUM-Adapter

- This adapter can be used for following plc-type: 805, 810, 820, 840, 850, 880

More to the interface-cable as well as the current manual you can download under

<https://www.tpa-partner.de>

(c) copyright 2000-2024 by TPA

Menutree Website:

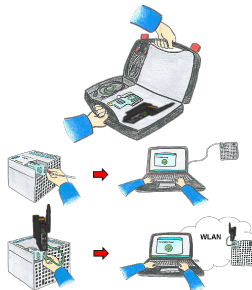
- + Products / docu / downloads
- + Accessories
 - + Adapter for s5-interface
 - + CP525-K-adapter for PG-USB

QR-Code Website:



Please make sure to update your drivers before using our products.

Universally on/around machine and PLC



Communication with S5/S7-PLC (mainly), whether wired or via WIFI?

Universally armed for all requirements with the WIFI-sets, regardless of whether it is an S7-PLC, S5-PLC or a controller from another manufacturer with a LAN connection, having everything with you, depending on the used set, is your advantage.

- * S5-LAN++ or S5-BRIDGE for S5-PLC
- * S7-LAN or S7-BRIDGE for S7-PLC (PPI/MPI/Profibus)
- * ALF-UA as a pure converter from Ethernet to WIFI
- * Patch-cable or Cross-cable in order to act also wired

With the WIFI-Set you simply have everything with you in a handy case, be prepared for everything.

This makes (on-site-) work a pleasure.