

Menutree Website:

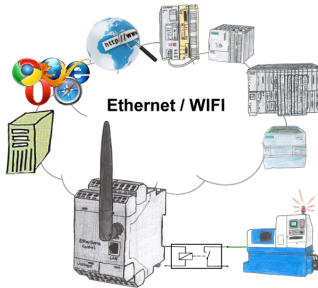
- + Products / docu / downloads
- + Accessories
 - + Connection cable / adapter
 - + Ethernet
 - + Patchcable 0.25m

QR-Code Website:



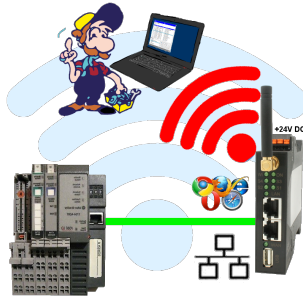
Please make sure to update your drivers before using our products.

Relaycontacts 230VAC/16A directly over WIFI/LAN



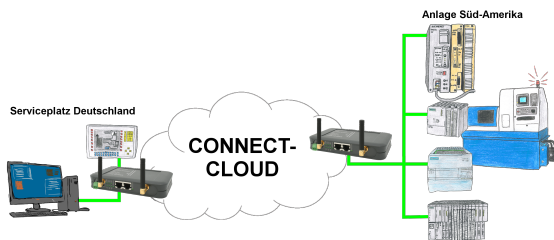
Switch with the EtherSens Control with relay-output easily and directly over LAN or WIFI up to 230VAC/16A, switchable over web-browser, TCP/IP-protocol or PLC-controlled. At the same time you monitor the switching-states on the optional SD-card or on the FTP server.

Wireless around the Allen-Bradley-PLC



Move wirelessly around the Allen-Bradley-PLC and communicate for example ONLINE in the status

Worldwide remote-access thanks to our own cloud



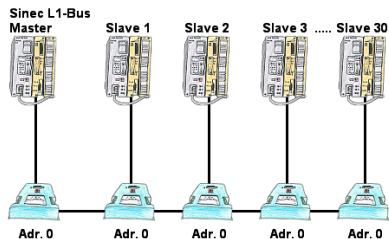
Worldwide remote-maintenance without additional costs thanks to our own cloud

Your devices connect to your own cloud, no matter where they are in the world. Only your devices are in your own private cloud, no one else has access to the cloud. In addition, you can provide each device with its own connection-password, so that the individual systems are protected despite the private cloud.

No registration on any portals, no hidden additional costs, your devices in your own cloud are always accessible.

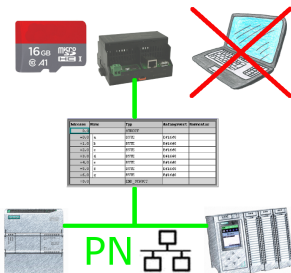
This is how remote maintenance/remote access is fun.

Sinec-L1-bus configuration without BT-777-terminal



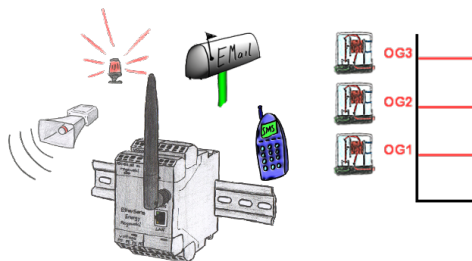
You have to configure a Sinec-L1-bus, own the master, but there's no BT-777-busterminal to buy? No problem, connect the IBX-Klemme to every S5-PLC that is in the run via the optional IBX-SPS-cable, supply every IBX-Klemme with ext. 24V DC if the PLC is not able to provide it, set-up the address 0 and define the actual L1-bus-address in the PLC. Now your master can communicate with the slave-assemblies.

Data backup S7-PLC PN-port on SD-card



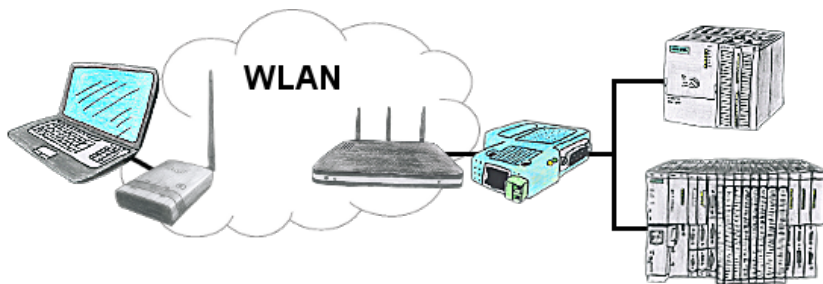
S7-PLC triggered DB-backup/-restore without additional PC via PN-port on SD card

Alarming



Dont log with EtherSens-device only the process-values, also monitor them simultaneously. Once a predetermined threshold is exceeded/not reached, the EtherSens-device indicates this.

Operation as a WLAN-client



You are on site your plant and should move round the machine and simultaneously control or monitor. WLAN is reachable, but your PC is not able to provide WLAN. No problem, you parametrize ALF as a client and connect him to the PC and join the reachable WLAN and you are online on the PLC.