

Menutree Website:

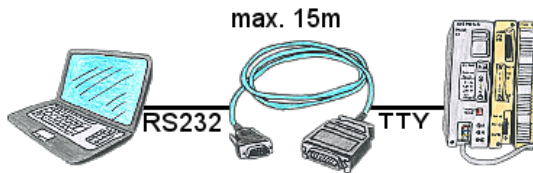
- + Products / docu / downloads
- + Accessories
 - + Connection cable / adapter
 - + USB
 - + USB 2.0 connection cable type A/M

QR-Code Website:



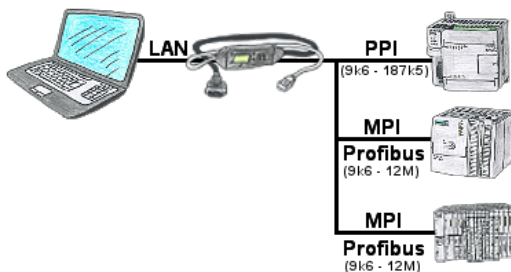
Please make sure to update your drivers before using our products.

Serial communication with S5-PLC (CPU-assemblies 15pin)



S5-PLC communication from PC with serial COM-port and your programming package?
PG-Com-cable up to a length of 15m are the appropriate interface-product. Without special accessories, without external supply, plugged on PC and S5 PLC and work immediately. Connection with original Siemens-sliding-locking to S5-PLC, with screw-bolts on the PC. Function with S5-90U to S5-155U. Connection PLC-side 15pin, PC 9pin (adaptation to 25pin at any time possible).

Programming of S7-PLCs via LAN



S7-PLC with PPI, MPI, Profibus connection, but data should be read/written via network?

Ethernet-CP cannot be used because of the effort (hardware-configuration), price, space in the rack, availability. Plug S7-LAN-module/MPI-LAN-cable into a free bus-connector, assign the IP-address and the PLC can be reached via the network. There is no need to invest any more effort. The adapter can be parameterized via an integrated web-server or a configuration-tool. No changes to the S7-PLC are necessary to operate the adapter.

The adapter can also be used to implement PUT/GET-connections to other controls, but the PLC-program must be changed for this. Other PLCs can just as well read/write data from this controller via PUT/GET; nothing needs to be changed in the PLC program.

Automation very easy: Connect, parameterize and work.

Profinet-Member-Analysis



Exact analysis of your Profinet members.

Addresses, configurations and other data can be recorded directly.

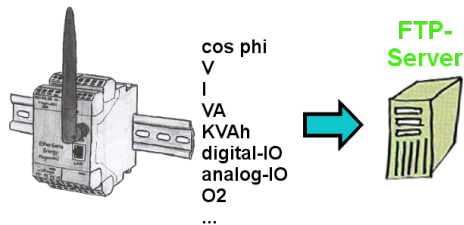
See immediately possible conflicts due to the configuration.

Remote maintenance of your S5-PLC via LAN / Internet



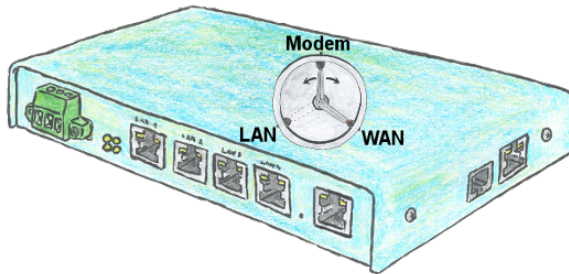
You have access to a on-site network and your PLC has no LAN-connection? No problem, plug the S5-LAN on the PLC and you will have immediate access to the PLC from afar.

Logged data to FTP-server



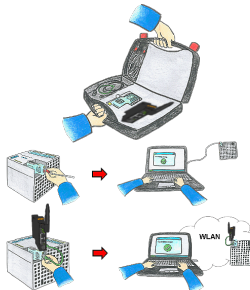
Do you need the logged data not locally but on your site? Then just turn on recording on an FTP-server and the data is stored. You can then immediately read and process this data.

Universal router



You need to be realized a flexible device for the remote maintenance of your systems? No problem with the TELE-Router you have a device that you can set easily and quickly to the requirement. Whether you need a connection between the modem and LAN, modem and WAN or LAN and WAN.

Universally on/around machine and PLC



Communication with S5/S7-PLC (mainly), whether wired or via WIFI?

Universally armed for all requirements with the WIFI-sets, regardless of whether it is an S7-PLC, S5-PLC or a controller from another manufacturer with a LAN connection, having everything with you, depending on the used set, is your advantage.

- * S5-LAN++ or S5-BRIDGE for S5-PLC
- * S7-LAN or S7-BRIDGE for S7-PLC (PPI/MPI/Profibus)
- * ALF-UA as a pure converter from Ethernet to WIFI
- * Patch-cable or Cross-cable in order to act also wired

With the WIFI-Set you simply have everything with you in a handy case, be prepared for everything.

This makes (on site) work a pleasure.