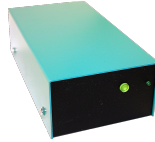


Menutree Website:

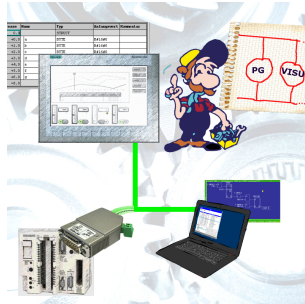
- + Products / docu / downloads
- + Hardware
 - + Memory modules / Prommer
 - + EPROM-ERASER UVL3

QR-Code Website:



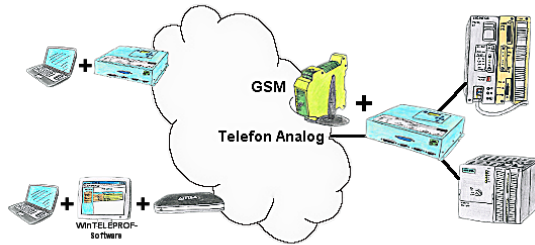
Please make sure to update your drivers before using our products.

Profinet-panel directly on S5-PLC



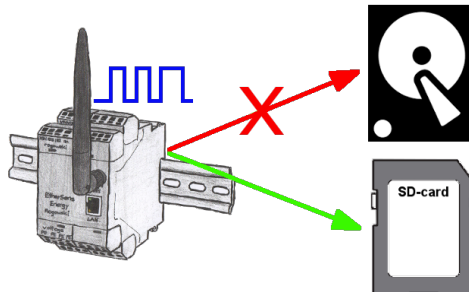
Replace defective panels in your "old" S5-systems with current and available S7-panels
To do this, simply insert a placeholder PLC (e.g. 315-2-PN / DP) in the WinCC-project, the IP-address of the PLC corresponds to the IP-address of the S5-LAN++-module. You can then visualize the data as usual.
At the same time, the PLC can also be programmed/monitored via the network.

Remote maintenance / telecontrol of PLC-devices



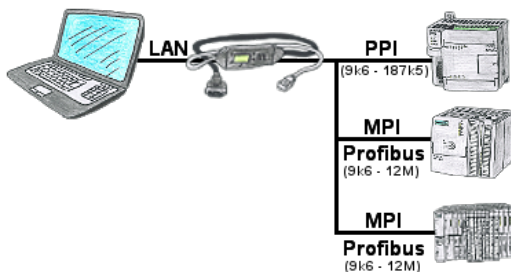
Access to the connected PLC takes place by coupling via Analogue-, ISDN- (only with AB-adapter) and GSM-(only with external GSM-modem)-line.

Standalone recording



With the integrated SD-card-slot you back-up the recorded data in the device and dont need an external memory. Nevertheless you can send additional the data via FTP to a FTP-server.

Programming of S7-PLCs via LAN



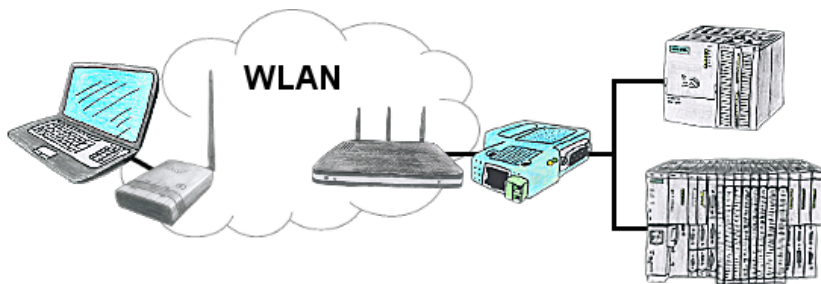
S7-PLC with PPI, MPI, Profibus connection, but data should be read/written via network?

Ethernet-CP cannot be used because of the effort (hardware-configuration), price, space in the rack, availability. Plug S7-LAN-module/MPI-LAN-cable into a free bus-connector, assign the IP-address and the PLC can be reached via the network. There is no need to invest any more effort. The adapter can be parameterized via an integrated web-server or a configuration-tool. No changes to the S7-PLC are necessary to operate the adapter.

The adapter can also be used to implement PUT/GET-connections to other controls, but the PLC-program must be changed for this. Other PLCs can just as well read/write data from this controller via PUT/GET; nothing needs to be changed in the PLC program.

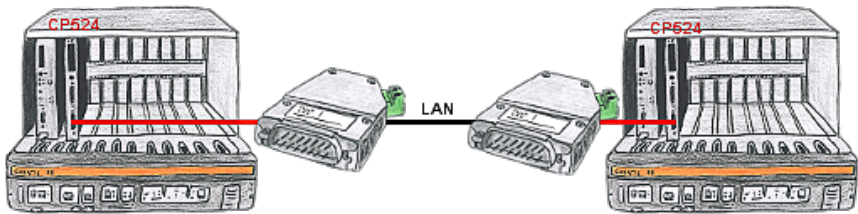
Automation very easy: Connect, parameterize and work.

Operation as a WLAN-client



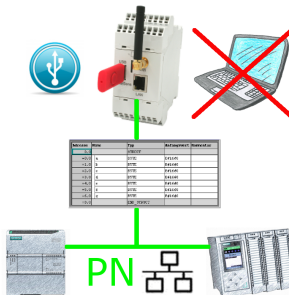
You are on site your plant and should move round the machine and simultaneously control or monitor. WLAN is reachable, but your PC is not able to provide WLAN. No problem, you parametrize ALF as a client and connect him to the PC and join the reachable WLAN and you are online on the PLC.

Extension of a 3964R-line via LAN



There is a control with CP524 in your outstation and the communication partner of the CP has moved locally. Connecting path is a LAN-network. So each of both participants gets a 3964R-LAN and after input of the partner's IP-address a coupling via LAN will be configured.

Data backup S7-PLC PN-port on USB-stick



S7-PLC triggered DB-backup/-restore without additional PC via PN-port to USB-stick