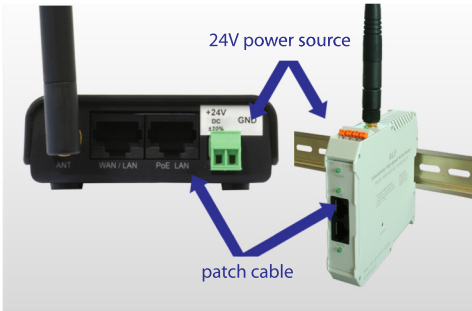
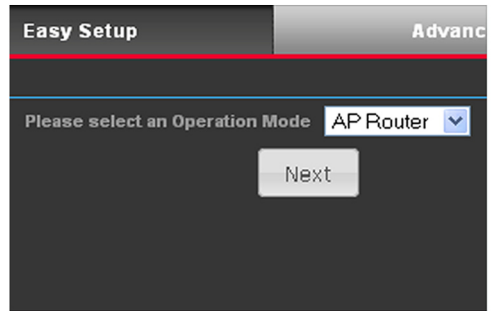


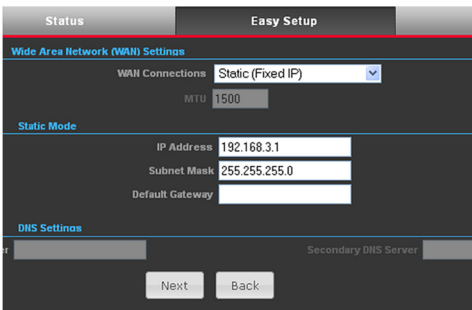
Using S7-LAN with an ALF as a WLAN Router



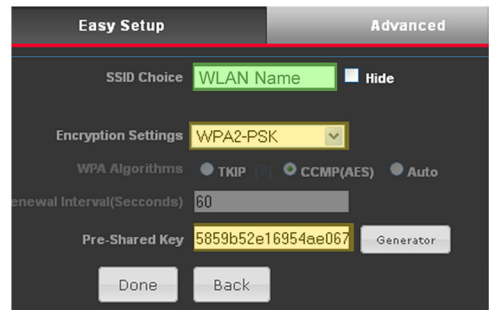
- 1 Connect the 24V power source and the computer to configure



- 2 Select „AP-Router“ on menu „Easy Setup“

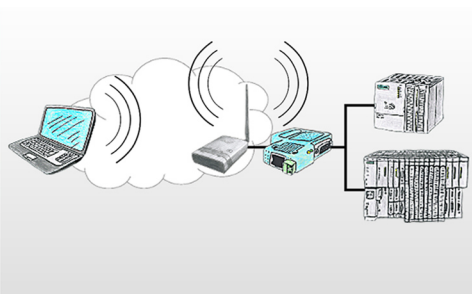


- 3 Configure your IP address and subnet mask



- 4 Now configure your networkname and encryption

Our recommended encryption is WPA2

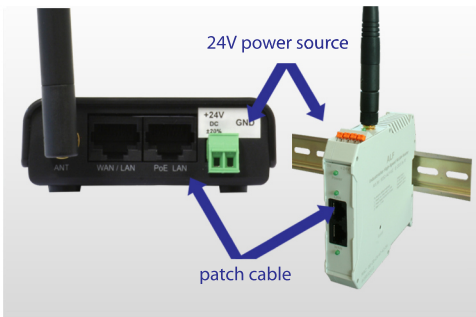


- 5 Connect the S7-LAN with a patch cable
Your S7-LAN is now available from every WLAN participants

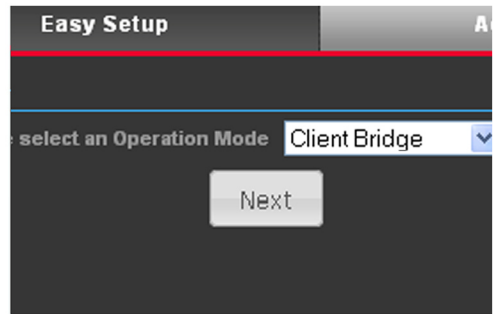


- 6 Installing TIC driver
TIC driver available on www.tpa-partner.de

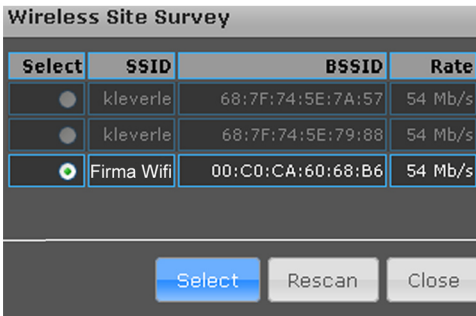
Integrate a S7-LAN in a available WLAN with an ALF



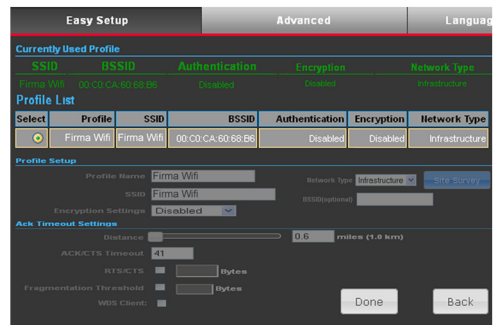
- 1 Connect the 24V power source and the computer to configure



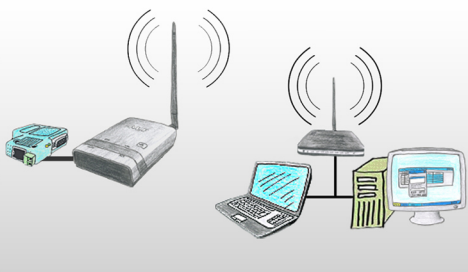
- 2 Select „Client Bridge“ on menu „Easy Setup“



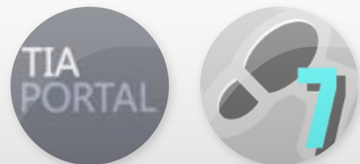
- 3 Press „Site Survey“ to search every WLAN and select your WLAN



- 4 Select your WLAN and enter your password. Press „Done“ to confirm

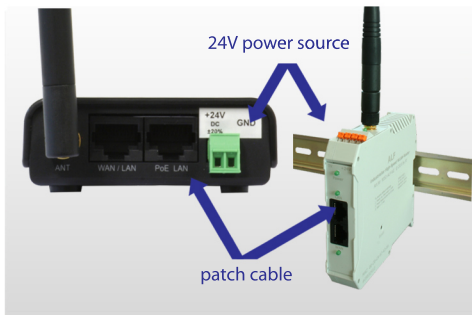


- 5 Connect the S7-LAN with a patch cable
Every network has to be in the same IP area
Your Module is now integrated

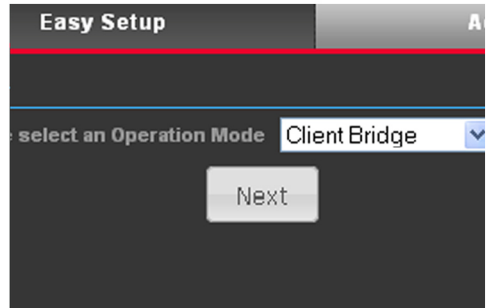


- 6 Installing TIC driver
TIC driver available on www.tpa-partner.de

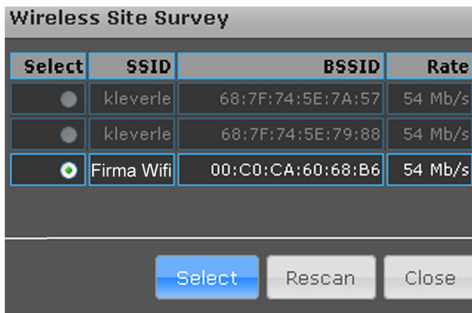
Integrate a S5-LAN++ in a available WLAN with an ALF



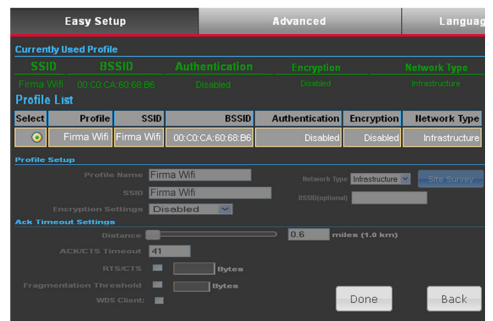
- 1 Connect the 24V power source and the computer to configure



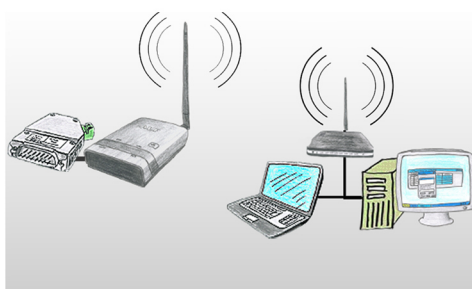
- 2 Select „Client Bridge“ on menu „Easy Setup“



- 3 Press „Site Survey“ to search every WLAN and select your WLAN



- 4 Select your WLAN and enter your password. Press „Done“ to confirm

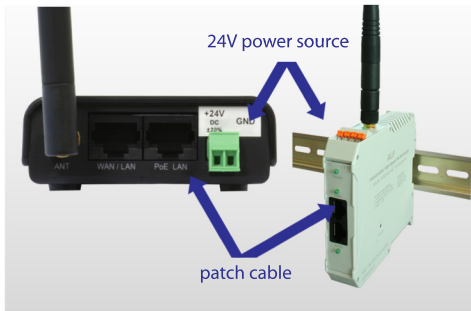


- 5 Connect the S5-LAN++ with a patch cable
Every network has to be in the same IP area
Your Module is now integrated

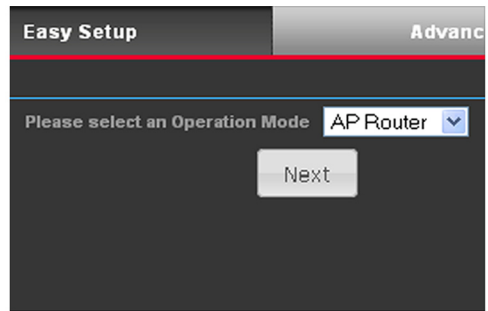


- 6 Installation:
- S5-Patch for original Step5
- PLCVCOM (virtual COM-Port)
Tools available on www.tpa-partner.de

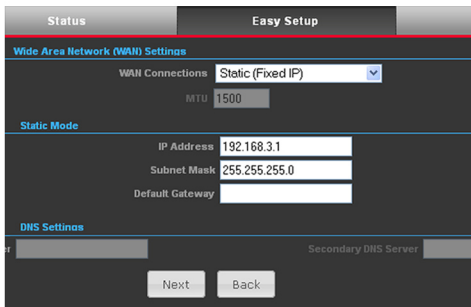
Using S5-LAN++ with an ALF as a WLAN Router



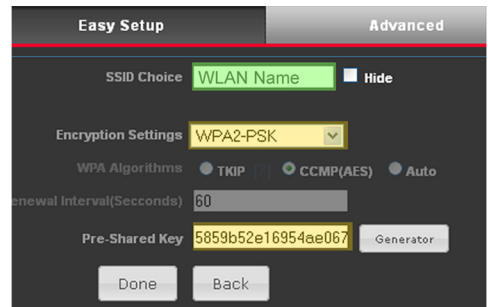
- 1 Connect the 24V power source and the computer to configure



- 2 Select „AP-Router“ on menu „Easy Setup“



- 3 Configure your IP address and subnet mask



- 4 Now configure your networkname and encryption
Our recommended encryption is WPA2



- 5 Connect the S5-LAN++ with a patch cable
Your S5-LAN++ will get an IP from the DHCP server and is now available from every WLAN participants



- 6 Installation:
 - S5-Patch for original Step5
 - PLCVCOM (virtual COM-Port)Tools available on www.tpa-partner.de

Menutree Website:

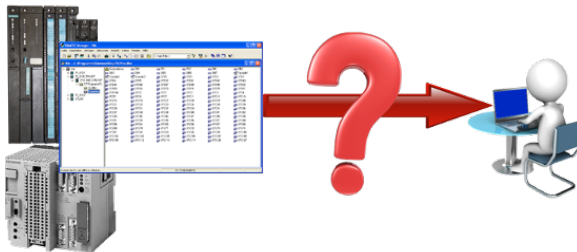
- + Products / docu / downloads
- + Hardware
 - + Programming devices
 - + S7
 - + WLAN/WIFI
 - + Profinet PLCs / Ethernet-CPs
 - + ALF-Devices
 - + ALF

QR-Code Website:



Please make sure to update your drivers before using our products.

Automatical backup of your PLC



Guaranteeing security against production-downtimes through regular backups of S5- or S7-PLCs on your PC. S5/S7/H1-backup/restore-software saves all projected controls at a predetermined time. Whether every minute, hourly, daily, weekly or once a month, the PLC is completely read out and saved on the hard-disk/network-drive of the computer.

If the backup-battery fails or the PLC is damaged, you can use this backup-file to restore the PLC.

Universally on machine and PLC



Remote access to all your systems, PLCs without great effort. Even triggering of actions by setting the integrated digital-outputs or reading in the digital and analog-inputs is possible via the Internet connection.

Regardless of whether you use your PC with the CONNECT-software or have connected a device from the CONNECT-family. Couplings via LTE also enable access to the LAN-interface on the system side. No special SIM-card is required for this. A solution with little effort and everything within your "private" cloud.

Remote-maintenance Siemens-S7-PLC with MPI/Profibus



Remote-maintenance of a Siemens-S7-controller with S7-LAN on MPI/Profibus via secure VPN-tunnel of the TeleRouter

WIFI not allowed, what now?

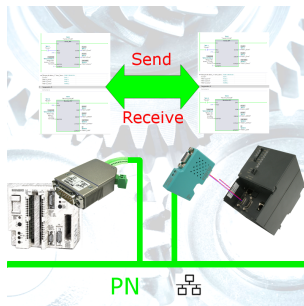


You may not use WIFI in your environment?

Connect the USB-ETHERNET-adapter to the ProfiNet-WATCHDOG's USB-port and create another Ethernet-socket.

Connect your PC directly with LAN-cable to the ProfiNet WATCHDOG.

S7-300/400 (MPI/DP) to S5



Coupling S7-controller with MPI/Profibus at S5-control with PD-port via network

Detect Profinet burglary



Detection and logging of unauthorized access in the defined Profinet

Attempted break-ins and access to the network are recognized immediately and e.g. reported by email

Logging of all accesses in the network for historical processing

Possible data-storage USB-stick or FTP-server via USB-network-stick.

Wireless around the Beckhoff-PLC



Move wirelessly around the Beckhoff-PLC and communicate for example ONLINE in the status