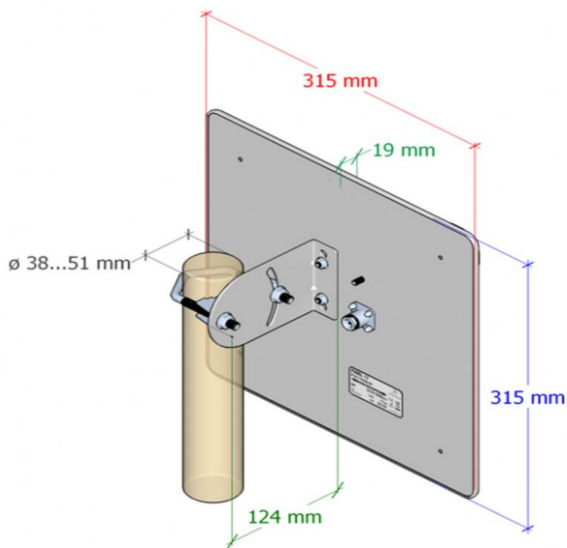


Assembly instructions Beam-antenna for ALF

Fundamental:

This antenna is a beam-antenna designed for the 2.4 GHz WLAN frequency band with a performance gain of 17dbi. Through the rich performance gain and the strong signal bundling, very high distances can be bridged. The assembly takes place on a rod with diameter 38 - 51mm. The antenna cable must be tightly screwed after assembly, mounting the two antennas in direct alignment to each other.

Installation:



Attention: No liability for performance or durability problems, losses are taken over if the assembly was not carried out according to this manual.

Menutree Website:

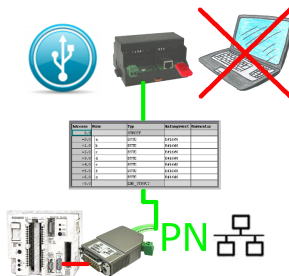
- + Products / docu / downloads
- + Accessories
 - + Antennas / Accessories
 - + Beam antenna for ALF

QR-Code Website:



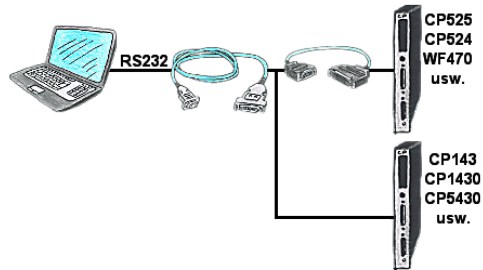
Please make sure to update your drivers before using our products.

Data backup S5-PLC on USB-stick



S5-PLC triggered DB-backup/-restore without additional PC via PG-socket and Ethernet on USB-stick

Serial communication with CP and more S5-assemblies



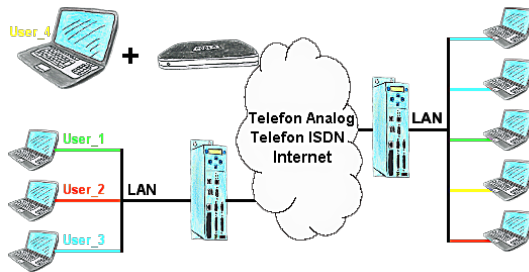
You have a PC with programming software and a 9pin COM-port as interface? No problem, for this purpose the PG-UNI-II-cable is exactly the right product. Connect it to a Siemens assembly such as H1-CP (CP1430), WF470 and PC or CP-525 with the CP525-adapter and PC and you're Online.

Remote-maintenance Beckhoff-PLC



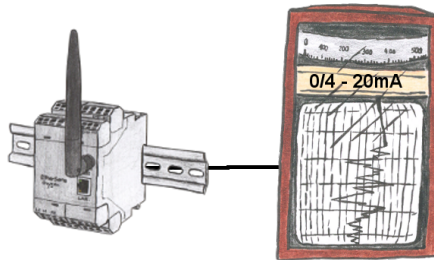
Remote-maintenance of a Beckhoff-controller with network-connection via secure VPN-tunnel of the TeleRouter

User dependant network access



You have PLC/LAN-participants different supplier in your network and everybody should have access to this network? No problem, you give every supplier a VPN-username and password, define in the destination device a user-dependent network-access and after positiv login he only can communicate to the released ip-addresses.

Data acquisition/logging



By connecting a line-recorder to the EtherSens-device anyone without network-knowledge can visually capture and further process the log.