

Menutree Website:

- + Products / docu / downloads
- + Hardware
 - + PD-interface-multiplexer
 - + MINI-MUX

QR-Code Website:



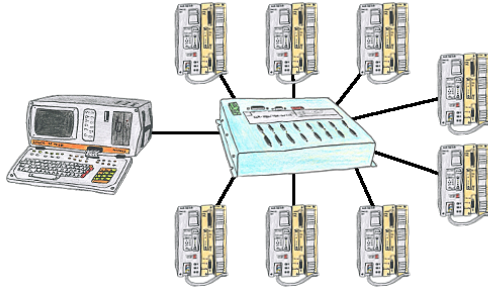
Please make sure to update your drivers before using our products.

Wireless around the Moeller-PLC



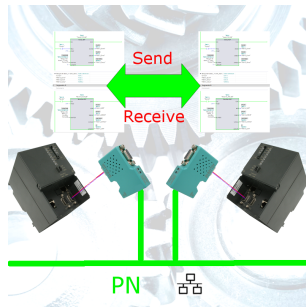
Move wirelessly around the Moeller-PLC and communicate for example ONLINE in the status

Many PLC-devices conflated



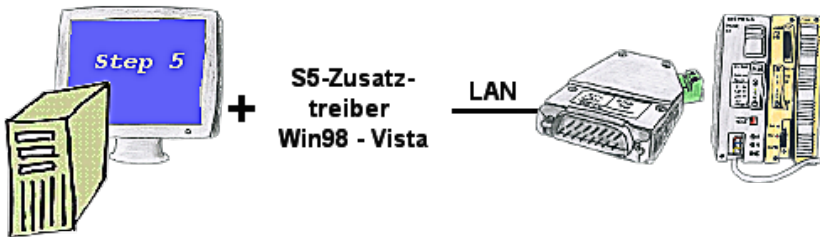
You have many PLC and you want to programm them central on one place? No problem, you have to connect them all to the KOR/MUX-Tele-Switch an with the PD-bus-selection of your Step5-software you go ONLINE. Of course the KOR/MUX-Tele-Switch is cascadable, so you can connect up to 30 PLCs to the devices.

S7-300/400 (MPI/DP) to S7-300/400 (MPI/DP)



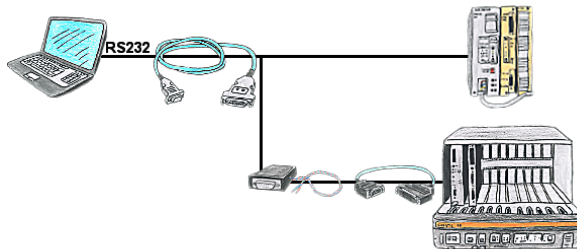
Coupling S7-controller with MPI/Profibus at S7-controller with MPI/Profibus via network

Communication with Win98 – XP/Vista/7/8/10/11 via network to S5-PLC



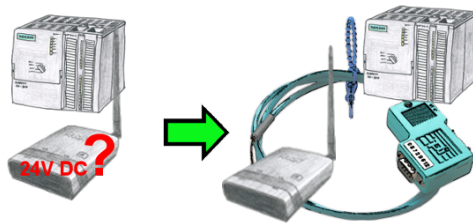
You still have a PC with Win98 and a MS-DOS-based Step5-package and would like to go Online on your S5-PLC via LAN? No problem, the provided virtual Com-Port PLCVCom emulates a COM-port on your PC with which you go Online. Even your MS-DOS-based Step5-software on this WIN98-PC can use this virtual Com-Port. With a patchtool for the Siemens Step5-software, which is provided as well, nothing else stands in your way to communicate via LAN.

Serial communication to the S5-PLC



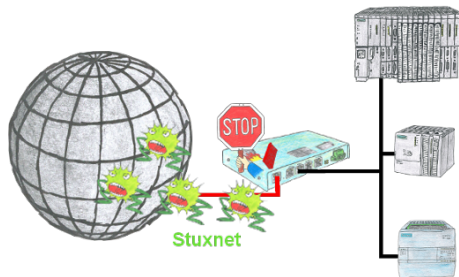
You have a PC with programming software and a 9pin COM-port as interface? No problem, for this purpose the PG-UNI-II-cable is exactly the right product. Connect it to PLC and PC and you're Online. The communication itself is visible by the both included LEDs. Even the 25pin interface of the AS511-card is no problem. You need the NETZ-adapter and also the AG-150-adapter and then this control is programmable, too.

24V-supply from the PLC



You want to install your ALF directly in the switch-board and would like to use the 24V of the existing S7-PLC? No problem, connect the open ended side of the Kabelbrücke to the 24V port on your ALF and the bus-side on the MPI- or Profibus of this PLC. Even the ALF is supplied above this PLC.

Protection against virus attacks



Protection of your systems against virus-attacks such as "Stuxnet"

Switch the S7-Firewall or TeleRouter with the S7-firewall-option between the PLC(s)/machine-network and the company-network to prevent your system- and process-data from being destroyed.