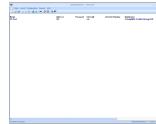


**Menutree Website:**

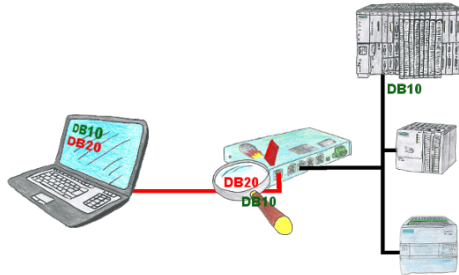
- + Products / docu / downloads
- + Software
  - + PLC-software-tools
  - + PLC – Data safety
  - + Windows

**QR-Code Website:**



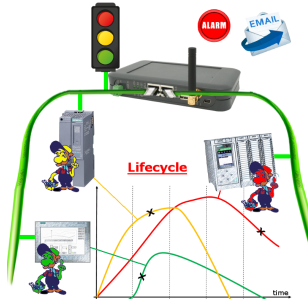
Please make sure to update your drivers before using our products.

Protection of data areas in the PLC



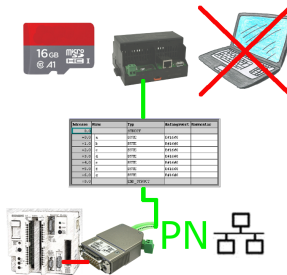
You have in your facility machinery with complex program structures and want to prevent that the users do not change comprehensible content? No problem, with the S7-firewall you can assign specific data fields to each user or even generally protect certain data areas in the PLC.

## Profinet life cycle monitoring



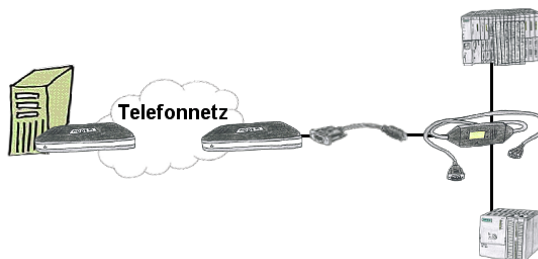
Identify impending failures in your Profinet.  
Creeping aging will be displayed to you very detailed.  
The Profinet-Watchdog give you the change to react before something happens.

## Data backup S5-PLC on SD-card



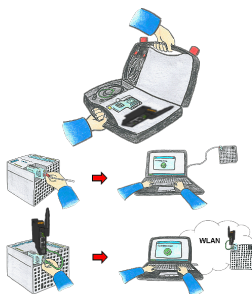
S5-PLC triggered DB-backup/-restore without additional PC via PG-socket and Ethernet on SD-card

## Remote maintenance with TS-software without original TS-adaptor



You have to reach urgent your PLC via remote maintenance and have no TS-adaptor in your company? No problem, configure with the MPI-Kabelmanager your S7-interface-cable MPI-II-Kabel the mode "TS" for "remote maintenance", connect this cable with the TS-Adapter (article number 9350-TS) with a standard modem and send it all to your client. Now you will be able to start the connection with your TS-software and solve the problem. And this all without buying a original TS-adaptor.

## Universally on/around machine and PLC



Communication with S5/S7-PLC (mainly), whether wired or via WIFI?

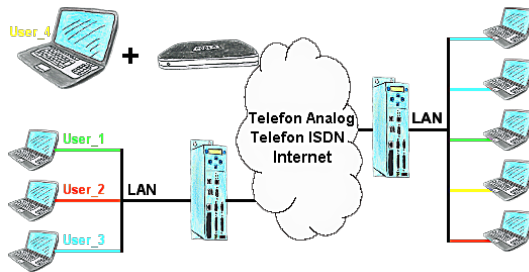
Universally armed for all requirements with the WIFI-sets, regardless of whether it is an S7-PLC, S5-PLC or a controller from another manufacturer with a LAN connection, having everything with you, depending on the used set, is your advantage.

- \* S5-LAN++ or S5-BRIDGE for S5-PLC
- \* S7-LAN or S7-BRIDGE for S7-PLC (PPI/MPI/Profibus)
- \* ALF-UA as a pure converter from Ethernet to WIFI
- \* Patch-cable or Cross-cable in order to act also wired

With the WIFI-Set you simply have everything with you in a handy case, be prepared for everything.

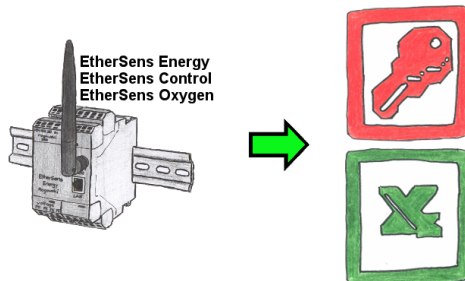
This makes (on site) work a pleasure.

## User dependant network access



You have PLC/LAN-participants different supplier in your network and everybody should have access to this network? No problem, you give every supplier a VPN-username and password, define in the destination device a user-dependent network-access and after positiv login he only can communicate to the released ip-addresses.

## Logged data to Excel



Capture the required values, whether if energy-data, states of inputs or outputs, process values such as oxygen-content in the environment,... and write this with a timestamp in a CSV-file. This file can then be read and processed with Excel.