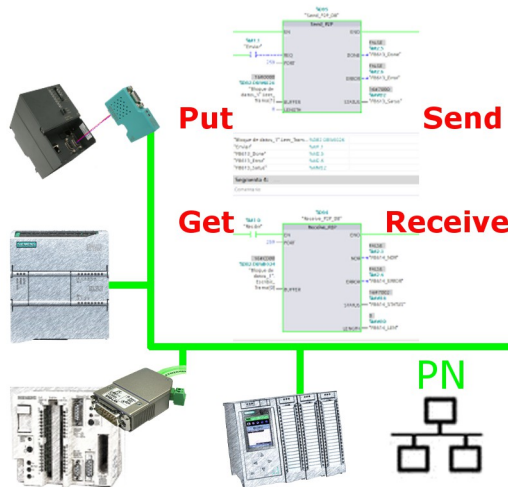


Handling short instructions for PLC coupling



Commissioning of S5-LAN++ and S7-LAN

Before you can start with the configuration of the coupling you should first set up your S5-LAN++ (to access your S5 controller via the PG interface) and / or S7-LAN (to access your S7 controller via PPI/MPI/Profibus) modules. For this please read the short instructions for the S5-LAN++ or S7-LAN.

Configure coupling

The S5-LAN++ and S7-LAN are supporting multiple couplings. In general a distinction is made between a active controller, which establishes and manages the connection, and a passive controller, which waits for the connection and queries.

For the coupling type “PUT/GET” a change is only needed on the active controller, because here flags and data blocks from the passive controller are directly accessed by the active controller.

For the coupling type “SEND/RCV” a change on both controllers is needed.

The following table shows a overview about possible couplings between controllers and shows up, where you can find more information about the configuration of the coupling. All descriptions and example applications can be downloaded on the product page of the S5-LAN++ and S7-LAN.

controller 1 (active)	controller 2 (passive)	coupling type	description / example
S7-200 via PPI	<i>any</i>	PUT/GET	project „S7-LAN_PUT-GET“
	S7-200 via PPI	SEND/RCV	project „S7-LAN_SEND-RCV“
S7-300/400 via MPI/DP	<i>any</i>	PUT/GET	project „S7-LAN Aktives PUT-GET“
	S7-300/400 via MPI/DP	SEND/RCV	project „S7-LAN an S7-LAN“
	S5 via PG port	SEND/RCV	project „S5-LAN++ an S7-LAN“

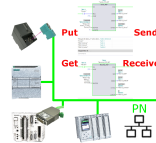
controller 1 (active)	controller 2 (passive)	coupling type	description / example
S7-300/400 via Ethernet-CP	S7-200/300/400 via PPI/MPI/DP	PUT/GET	S7-LAN manual section „Access via PUT/GET“
	S7-300/400 via MPI/DP	SEND/RECV	project „S7-LAN an S7-CP“
	S5 via PG port	PUT/GET	S5-LAN short instruction „S5-S7-coupling“
	S5 via PG port	SEND/RECV	Project „S5-LAN++ an S7-CP“
S7-1200/1500 via Ethernet	S7-200/300/400 via PPI/MPI/DP	PUT/GET	S7-LAN manual section „Access via PUT/GET“
	S5 via PG port	PUT/GET	S5-LAN short instruction „S5-S7-coupling“
S5 via PG port	S5 via PG port	SEND/RECV	project „S5-LAN++ an S5-LAN++“

For every example project shown in the table above there is also a description of the project. For S5 couplings this can be found within the ZIP archive with the example projects and for S7 couplings within the manual of the S7-LAN module.

Menutree Website:

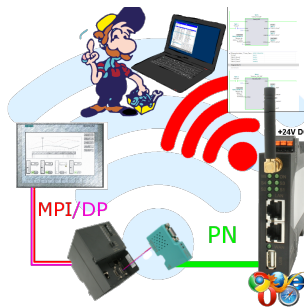
- + Products / docu / downloads
- + Applications
- + PLC-Coupling

QR-Code Website:



Please make sure to update your drivers before using our products.

Wireless around the S7-PLC



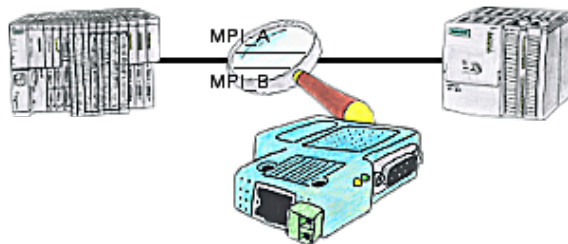
Move wirelessly around the S7-PLC and communicate for example ONLINE in the status

Detect and alarm Profinet burglary



Recognize cable breakage, contact problems and line faults.
Retransmissions and failures are logged and reported.
Early acting before total failure of the participant.

Malfunctions on the Bus although everything is (apparently) connected properly?



The S7-LAN can also be used for controlling/checking the MPI/Profibus. It will be plugged on the Bus so that you can take a look at the status of the busses via software on PC, for example the numbers of parity errors.