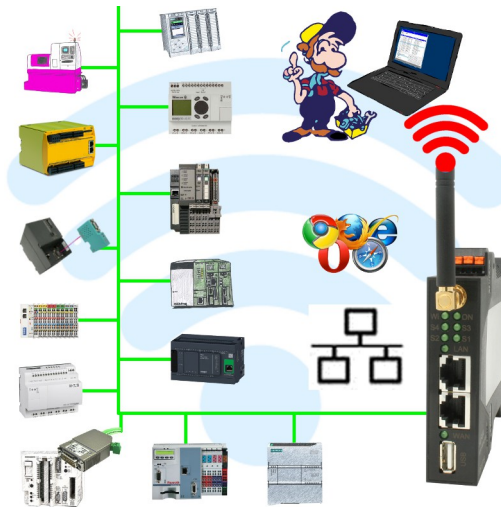


Handling short instructions for Wireless around the controller



Commissioning of ALF-UA

ALF-UA creates a WIFI network with the SSID "ALF-UA" and automatically assigns an IP-address via DHCP for the WIFI-participants who connect to the device.

Connect laptop/notebook to this WIFI-network, the respective PC is assigned an IP-address from the subnet 192.168.2.xxx.

If you need a different subnet for the connected controller, you can change the subnet after connecting the PC and ALF-UA:

- Connect PC to ALF-UA via WIFI
- Open the ALF-UA-website with a browser and IP address 192.168.2.1
- User name: admin
 Password: admin
- Menu „network“ => „AP router“ => „LAN“ => „router IP“ enter the desired subnet
 The changes are accepted by clicking on the diskette symbol
- After a restart, the device is available with the new parameters
- Rebuild the WIFI-connection of PC and ALF-UA

Connect the respective control/machine to the LAN port of the ALF-UA with a patch cable. Now that the PC and ALF-UA have been connected, the machine can be reached "wirelessly" and you can communicate.

Menutree Website:

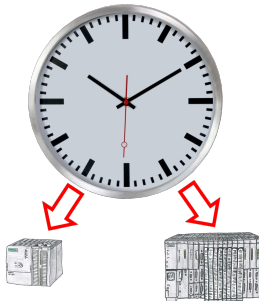
- + Products / docu / downloads
- + Applications
- + WIFI - PLC

QR-Code Website:



Please make sure to update your drivers before using our products.

Setting the PLC time

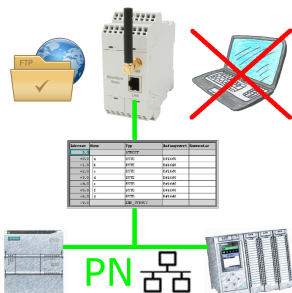


Summer-/winter-time switching, yet this buzzword is one term. Always in March and October the problem of time-change to the PLCs of their plant(s). Capture the controllers in the "S7-PLC exact time synchronization"-tool and automates setting the time in the controllers.

No change on the PLC-program necessary!

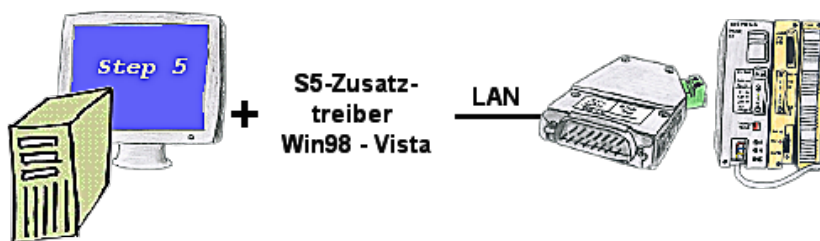
Whether MPI/Profibus via S7-LAN or Profinet!

Data backup S7-PLC PN-port on FTP-server



S7-PLC triggered DB-backup/-restore without additional PC via PN-port on FTP-server

Communication with Win98 – XP/Vista/7/8/10/11 via network to S5-PLC



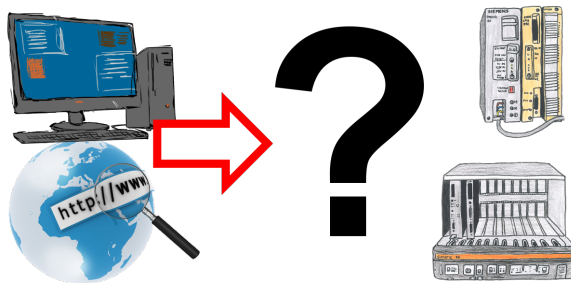
You still have a PC with Win98 and a MS-DOS-based Step5-package and would like to go Online on your S5-PLC via LAN? No problem, the provided virtual Com-Port PLCVCom emulates a COM-port on your PC with which you go Online. Even your MS-DOS-based Step5-software on this WIN98-PC can use this virtual Com-Port. With a patchtool for the Siemens Step5-software, which is provided as well, nothing else stands in your way to communicate via LAN.

Remote-maintenance Siemens-S5-PLC over VPN-server



Remote-maintenance of a Siemens-S5-controller with S5-LAN++ on PD-port over separate VPN-server

Interface-products for S5-PLC



Communication with S5-PLC, just how and with what?

Data communication with S5-PLC from PC or other devices, which interface fits on/to my controller. All questions you don't have to worry about. With "Programming adapter S5" you get the right interface.

Select the interface of your PC or device (serial via COM-port, USB, Ethernet (network), WIFI) and you will be shown the possible products.

Which one you use then is up to you.