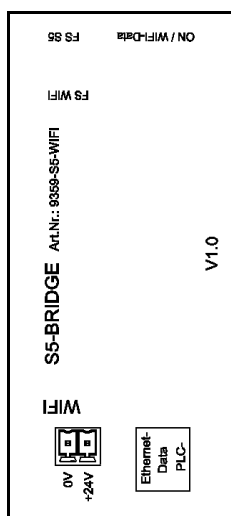


Handling-Shortinstruction for S5-BRIDGE



connects all your controllers to TTY over LAN and WIFI

1.) Connection/Labeling



The S5-BRIDGE has the following inscription printed on the top (15-pin D-Sub facing).

FS Wifi: Factory setting of the WIFI router
(3s hold down with a paper clip, then the Factory setting triggered, the device makes a reboot)

FS S5: Factory setting of the S5-part
(3s hold down with a paper clip, then the Factory setting triggered, the S5-part makes a reboot)

ON/WIFI: ON-LED, with WIFI-communication this LED flashes additionally

Assignment of voltage connection (top view):

Upper pin :	0V
Lower pin (towards the RJ45 socket) :	+24V DC

RJ45-socket with LEDs:

Upper LED:	Link and ethernet-communication to the router
Lower LED:	Link and communication to the S5-PLC

2.) Voltage connection

The module is plugged into the PG interface of the S5 PLC. If this PLC controller does not output 24V DC at this interface, the module can be powered externally. The assignment of the small connector is shown in the chapter above.

Check the assignment of the Phoenix-plug before using the external power-supply! The module itself is protected against reverse polarity, but it can not be guaranteed if it is plugged onto another module .

3. WebServer of WIFI-router

To access the device's website, all you need is a web browser (for example, Microsoft Internet Explorer, Mozilla Firefox, or Google Chrome). The website access is independent of the operating system or web browser of the computer used .

The web server of the device can be reached via WIFI or Ethernet. The factory IP-address is 192.168.1.56 with the subnet mask 255.255.255.0.

On delivery, the device is a WIFI access point and there is nothing in the way of connecting to the laptop with the SSID "S5-Bridge WiFi". There is no encryption required. The access is free .

Of course, the device can also be addressed via the integrated Ethernet interface with the known IP-address.

Communication with the S5-PLC via the integrated S5-LAN++-module is possible with the same IP-address 192.168.1.56 and subnet mask 255.255.255.0. Both „devices“ use the identical IP-address!

In order to communicate with Step5 from Siemens, you need the virtual COM port "PLCVCom" in addition to the module and the S5-Patch once. To do this, install "PLCVCom" on the PC, search for possible participants and connect to them. Do not close the virtual COM-port, only minimize it! Then install the S5-Patch once, without this tool the Step5 software from Siemens cannot communicate with the virtual COM-port.

No additional software needs to be installed for PG-2000-software, the tool accesses the controller directly via the IP address of the module set in the interface-dialog.

Attention:

To ensure communication via the S5-BRIDGE and the integrated S5-LAN++-module, the PC and the S5-BRIDGE must be in the same subnet !

More about the S5-BRIDGE and the current device manuals for S5-BRIDGE and S5-LAN++ can be found on the product page.

Alternative S5-interface-produkt (only LAN)

S5-LAN++-module (art.nr: 9359-LAN)

Industrial Ethernet

TCP/IP for each SIMATIC S5 over the PG-interface

Easy remote-maintenance over internet



Your advantage

- Fastest installation to the network of every SIMATIC - S5
- No complicated installation, simply plug on PD-interface and communicate
- S7 compatible
- Communication with Fetch/Write
- PUT/GET with S7-TCP/IP
- Reading and writing of S5-data (E,A,M,DB,Z,T) via TCP/IP
- Ideal for process-visualisation
- Programming with STEP 5 via Ethernet
- Simultaneous programming (multiple PD-channels) and visualisation possible (integrated multiplexer function)
- Power supply from the S5-PLC or external
- Disclosed TCP/IP-protocol
- DHCP / Auto-IP supported
- Timing-equitable communication with the S5-PLC via integrated firmware
- Driver-DLL for Windows available, EXCEL and WORD can read/write S5-data
- Compatible with VIPA-S5-TCP/IP driver
- Direct operation with WinCC via TCP/IP driver S5 Layer4 possible
- With WinCC Flexible/TIA (e.g. MP377, TP177B) via S7-TCP/IP to the Simatic S5 (CP-343-1 compatible)
- Data exchange between S5 – S5 and S5 - S7 via TCP/IP
- RK 512 and TCP/IP H1-ISO-On-TCP RFC1006 (CP1430 TCP) supported
- Versions: 3964R-LAN, ASCII-LAN, PG-LAN, as RS232-version and for the MUX757
- Including a free OPC-server license "OPC-Manager lite" [limited to 100 items]
- Examples and demo-version of communication driver as download available

Further interface-cable for S5

PG-UNI-Kabel

- Couples the PC (9pol. COM-interface) with the 15 pole X4/X5 interface port of the plc
- Galvanically separably to 1kV with PG ISO adapter
- Prolongable up to 300 meters
- Complete electronics in the plug housing
- Supply from the PLC over the current sources of the PG-port
- Functioned also at some CP's, IP's and Sinumerik controls



PG-UNI-II Kabel

- ESD firm transducer component up to 15kV
- 9pin and 15pin plug housings are made of solid metal
- For controll of data transmission, there are two LED's integrated (RxD and TxD).
- Couples the PC (9pol. COM-interface) with the 15 pole X4/X5 interface port of the plc
- Galvanically separably to 1kV with PG ISO adapter
- Prolongable up to 300 meters
- Complete electronics in the plug housing
- Supply from the PLC over the current sources
- Functioned also at some CP's, IP's and Sinumerik controls



PG-USB-Kabel

- Couples the PC (9pol. COM-interface) with the 15 pole X4/X5 interface port of the plc
- 15pin plug housings are made of solid metal
- Complete electronics in the plug housing
- Supply of the cable complete from the PC
- Prolongable up to 100 meters
- Is „active“ in relation of the plc
- Is working with standard S5-Software (Drivers for Win2000 and XP will be delivered with this cable)



Attention: The delivered driver for Windows 2000 and XP installs the PG-USB-Kabel as a virtual COM-Port. For use with the original Siemens Step5 software you have to install the also delivered driver "PG-USB-Kabel an S5" and then you can use it.

PG-COM-Kabel

- Couples the PC (9pol. COM-interface) with the 15 pole X4/X5 interface port of the plc
- Complete electronics in the plug housing
- Supply from the PLC over the 5V of the PG-port



PG-ISO-SET

- Galvanically separable from pc to the plc up to 1kV
- contact-protected housing, it is plastic housing
- The set contains PG-UNI-Kabel (3m) Art.Nr.9359-3 and the PG-ISO-Adapter Art.Nr.9359-8
- Supply of the module from the plc Voltage 5V and/or 24V

SC-09-Kabel

- Couples the PC (9pol. COM-interface) with the RS485 interface port of the plc
- PLC coupling with 25pin D-Sub or with Mini-Din-plug (special adapter)
- Supply from the PLC over the 5V of the PG-port
- Complete electronics in the plug housing

PG-ISO-Adapter for PG-UNI/PG-UNI-II

- Galvanically separable from pc above the PG-UNI-Kabel to the plc up to 1kV
- contact-protected housing, it is plastic housing
- Generates a new Ground and new Current Sources for the communication
- Supply of the module from the plc Voltage 5V and/or 24V

Netz-Adapter for PG-UNI/PG-UNI-II

- Generates new Current Sources for the communication
- Operation area: damaged Current Sources, not existing Current Sources, sanded Current Sources, passive Current Sources
- Supply of the module with 24V external

Additional adapters for PG-UNI/PG-UNI-II

general : Small Adapter, only 10cm long
Plug mechanics fitting to the plc

CP525-Adapter

- Connection to the **programming port** of the CP525

CP525-K-Adapter

- Connection to the **communication port** of the CP525
- This adapter can be used for following devices, too: CP524 and SAS523/525

AG150-Adapter

- **Only** use with the Netzadapter, because plc AG150 has an passive interface port!

WF470-Adapter

- **Only** used with the Netzadapter, because WF470 has an passive interface port!

SINUM-Adapter

- This adapter can be used for following plc-type: 805, 810, 820, 840, 850, 880

Additional adapters for PG-USB

general : Small Adapter, only 10cm long
Plug mechanics fitting to the plc

CP525-Adapter

- Connection to the **programming port** of the CP525

CP525-K-Adapter

- Connection to the **communication port** of the CP525
- This adapter can be used for following devices, too: CP524 and SAS523/525

AG150-Adapter

WF470-Adapter

SINUM-Adapter

- This adapter can be used for following plc-type: 805, 810, 820, 840, 850, 880



(c) copyright 2000-2024 by TPA

Menutree Website:

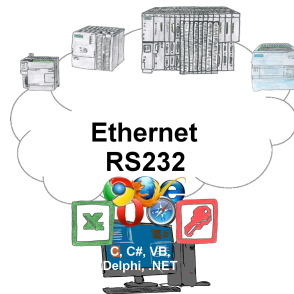
- + Products / docu / downloads
- + Hardware
 - + Programming devices
 - + S5
 - + S5 over LAN
 - + S5-BRIDGE

QR-Code Website:



Please make sure to update your drivers before using our products.

Communication-driver for S7-PLC



S7-PLCs and you need data in your PC or production planning system?

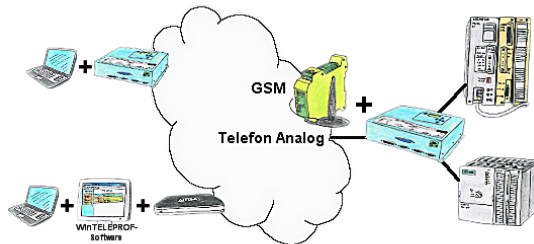
The S7-communication-drivers connect the office-world with the control-world. Be it classic with a serial-port of the PC up to communication over the network. Thanks to additional adapters (such as S7-LAN), controllers without a LAN connection can be connected to the network. Nothing stands in the way of communication with an IP-address. On your PC for Windows as a DLL-file, for Linux as an object, you have tools where you can access the data of the controls by calling up functions such as "ReadBlock" or "WriteFlag". Tie for e.g. the DLL into your project and your application already has PLC-access or simply access the data with Excel and process it in Excel.

Remote-maintenance Siemens-S7-PLC with PN-Port with firewall



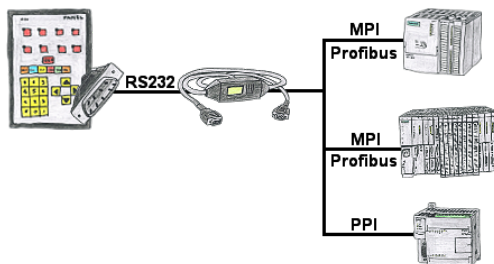
Remote-maintenance of a Siemens-controller with network-connection via secure VPN-tunnel and scalable firewall

Remote maintenance / telecontrol of PLC-devices



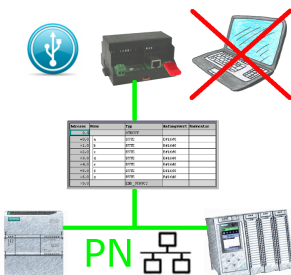
Access to the connected PLC takes place by coupling via Analogue-, ISDN- (only with AB-adapter) and GSM-(only with external GSM-modem)-line.

Visualisation of your S7- PLC via COM-Port



Your panel provides a serial port and no MPI/Profibus for connecting a S7-PLC. Connect the MPI/PPI-cable with it and you're Online with your panel.

Data backup S7-PLC PN-port on USB-stick



S7-PLC triggered DB-backup/-restore without additional PC via PN-port to USB-stick