

**Menutree Website:**

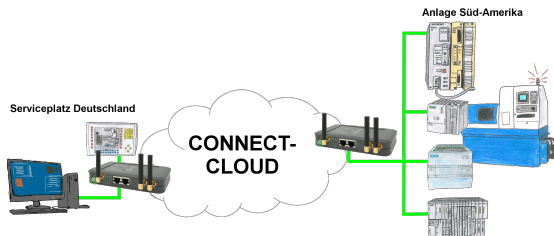
- + Products / docu / downloads
- + Hardware
  - + Analysis technic
  - + TINA-II

**QR-Code Website:**



Please make sure to update your drivers before using our products.

Worldwide remote-access thanks to our own cloud



Worldwide remote-maintenance without additional costs thanks to our own cloud

Your devices connect to your own cloud, no matter where they are in the world. Only your devices are in your own private cloud, no one else has access to the cloud. In addition, you can provide each device with its own connection-password, so that the individual systems are protected despite the private cloud.

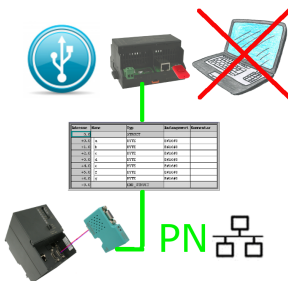
No registration on any portals, no hidden additional costs, your devices in your own cloud are always accessible.

This is how remote maintenance/remote access is fun.

## Ethernet and WIFI coupling to the S5-PLC

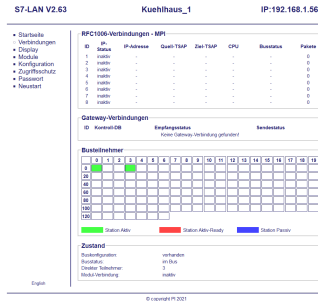


## Data backup S7-PLC over MPI/Profibus on USB-stick



S7-PLC triggered DB-backup/-restore without additional PC via MPI/Profibus on USB-stick

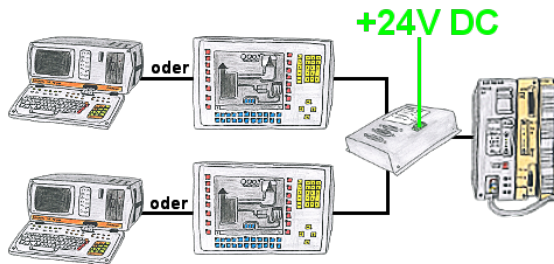
## Informations about the bus



View information from the connected bus-system in plain text without using the Simatic-Manager or TIA-Portal. With the connection-menu you get the list of reachable nodes, marked in color whether it is an "active bus-participant", is a "candidate for inclusion in the bus" or a "passive bus-participant".

You can also see whether cyclic bus-parameter-protocols have been received, you are "in the bus" yourself, the bus-address of the participant recognized as a "direct participant" (on which the S7-LAN is located) and whether the contained modules such as "variable control", "gateway-coupling",... actively communicate.

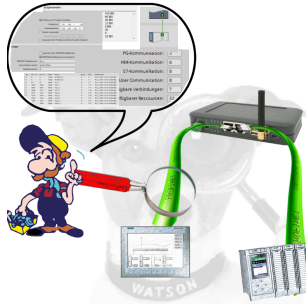
## PD-interface of the S5-PLC already occupied



Your PD-interface of the S5-PLC is already occupied with a panel and you should accomplish program modifications without removing the panel? No problem, connect the Multiplexer one-time to the PLC and then connect the panel and also your PC to the Multiplexer. Now you can work parallel with the PLC without the need of affecting the operation of the panel. You can even work with 2 programming devices simultaneously, 2x open the same block, only changes which are stored at last will be finally stored in the PLC. Also ideal for trainings purposes if PLC's with IO's are scare goods.

The 24V-version is ideal for control-cabinet-installation due to the smaller footprint. A universal multiplexer no matter what you connect at the two PG-sockets, both participants communicate parallel with the control.

## Profinet-Member-Analysis



Exact analysis of your Profinet members.  
Addresses, configurations and other data can be recorded directly.  
See immediately possible conflicts due to the configuration.

## Remote maintenance of your S5-PLC via LAN / Internet



You have access to a on-site network and your PLC has no LAN-connection? No problem, plug the S5-LAN on the PLC and you will have immediate access to the PLC from afar.