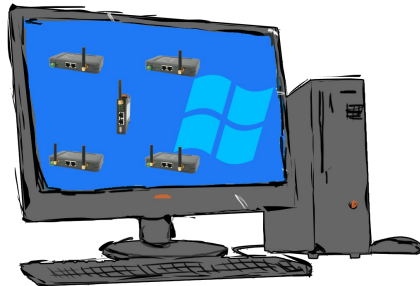


Handling-Shortinstruction V1.0 for

SW-CONNECT


(Software tool for Windows replaces hardware device)

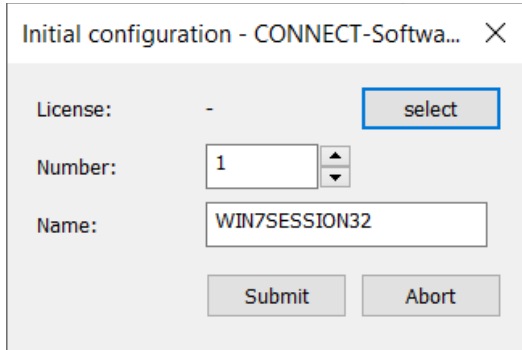


Requirements:

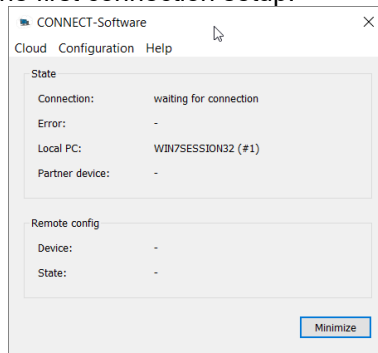
- at least Windows operating-system Win7, Win8, Win8.1, Win10 or Win11 (32- or 64-bit)
- Installation only possible as a user with admin-rights or as an administrator (users without admin-rights are not allowed to install Windows-drivers)

Installation:

- Download the tool to your PC via the SW-CONNECT product-page (see qr-code link on the following pages).
- Installation only as a user with admin-rights using Windows-Explorer with a right mouse click "Run as admin" on the "SW-CONNECT-Installer-Vxxx.exe" file or as an administrator (xxx stands for the respective version number)
- Follow the installation-script, after selecting the language and setting the installation target, the tool will be installed on the Windows-PC. The Windows-driver is automatically installed in the background.
- Start the tool by pressing the Windows key  and select the "SW-CONNECT" group in the alphabetically sorted list under "S". Open this and the actual tool „SW-CONNECT“ will be starten:



- Select the license file that you received by email and accept it, specify the number of the participant, analogous to the numbers of the CONNECT devices. A "device name" can also be specified. This name is then visible in the other devices like a hardware device.
- The basic settings are accepted by pressing the "Submit"-button. The tool is ready for the first connection setup.



In the "Cloud" menu you can search for your devices and have them displayed. If necessary, disconnect, display the address of the partner-device and view and change the configuration of the partner-device with "Remote configuration".

In the "Configuration" menu, you can parameterize the connection setup, specify the IP addresses, specify the interfaces used or reset the tool to the status after installation.

You can find more about the software in the manual in the download area under:

Menutree Website:

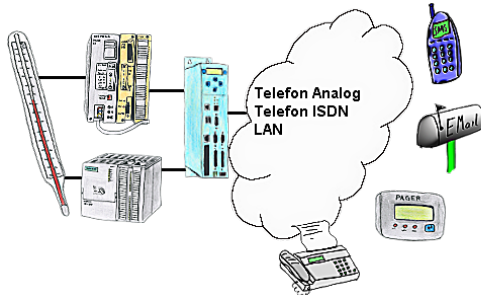
- + Products / docu / downloads
- + Software
- + Remote maintenance
- + Network / internet
- + CONNECT-software

QR-Code Website:



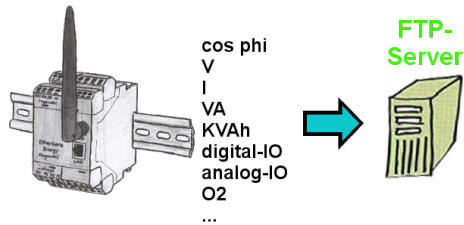
Please make sure to update your drivers before using our products.

Failure report transmission released by the PLC



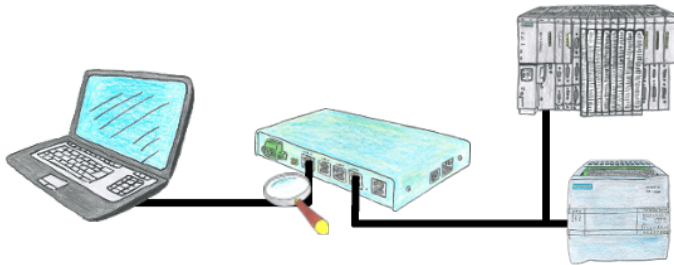
Your outstation reports the current value cyclically, or in case of malfunction the status via FAX, as SMS to your mobile phone, to your pager or also via e-mail.

Logged data to FTP-server



Do you need the logged data not locally but on your site? Then just turn on recording on an FTP-server and the data is stored. You can then immediately read and process this data.

Integrated Firewall-protection



You looking for a device with which you can create a remote maintenance via the Internet without compromising security? No problem, the TELE-Router offers exactly this feature. With the built-in firewall, you can adjust the device completely to your requirements.